

ZONING MAP

GC (General County)

GC2 (General County 2)

A-1 (Agricultural)

A-2 (Agricultural Estates)

A-3 (Agricultural Residential)

RE-MH (Residential Estate Manufactured Housing)

R-E (Residential Estate)

R-1 (Low Density Residential)

R-2 (Moderate Density Residential)

PH (Patio Homes Residential)

TH (Town Homes Residential)

R-3 (High Density Residential)

MX (Mixed Use)

MHP (Manufactured Home Parks)

MHS (Manufactured Home Subdivisions)

C-1 (Office Park / Professional Services)

C-2 (General Commercial)

C-3 (Highway Commercial)

C-4 (Major Thoroughfares Commercial)

I-1 (Light Industrial)

I-2 Heavy Industrial)

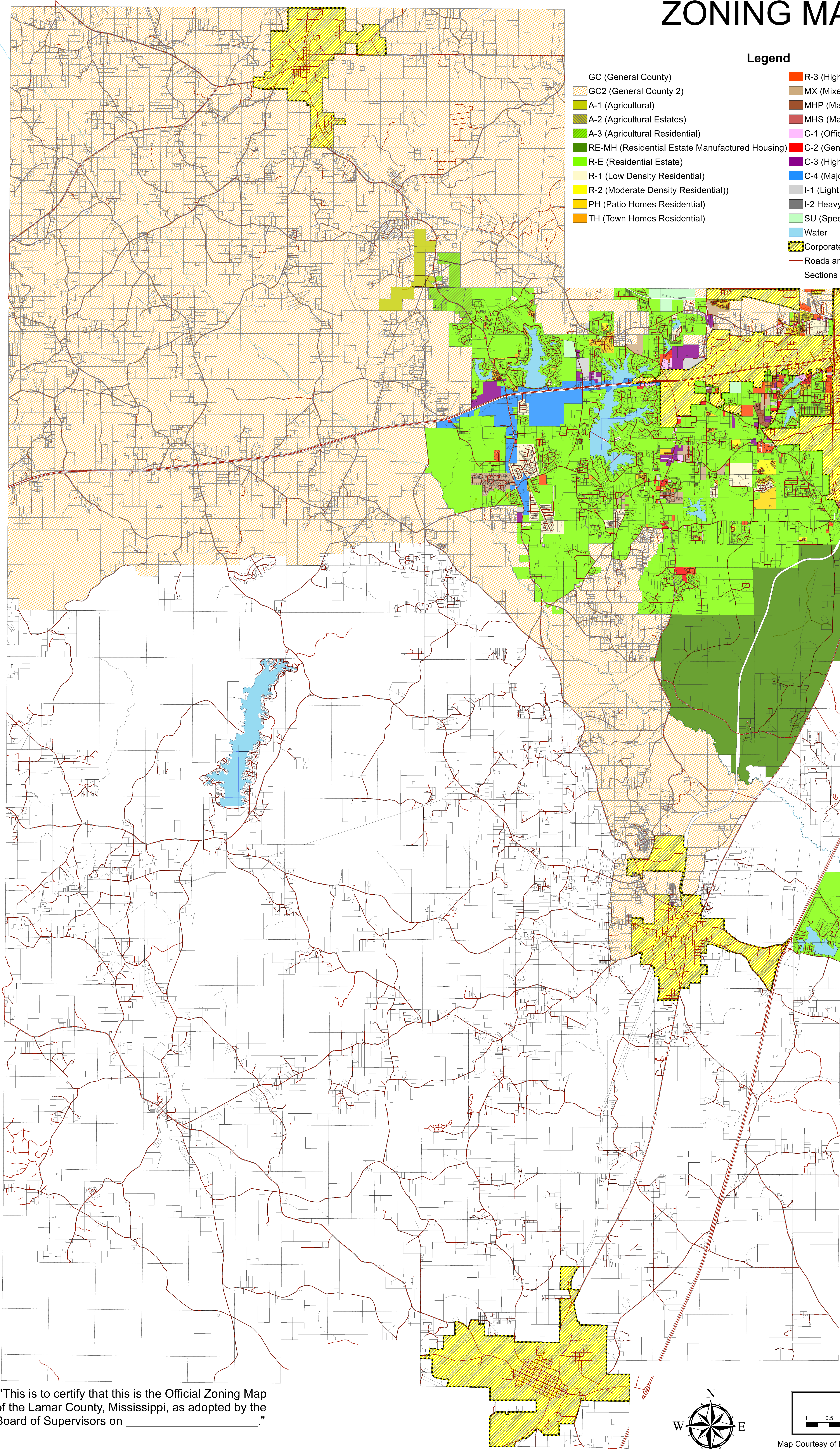
SU (Special Use)

Water

Corporate Limits

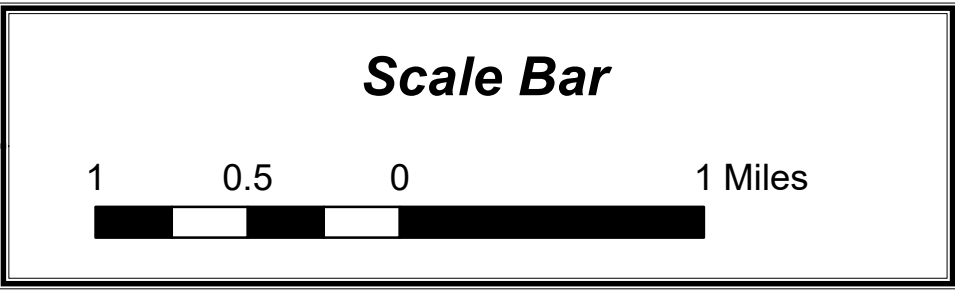
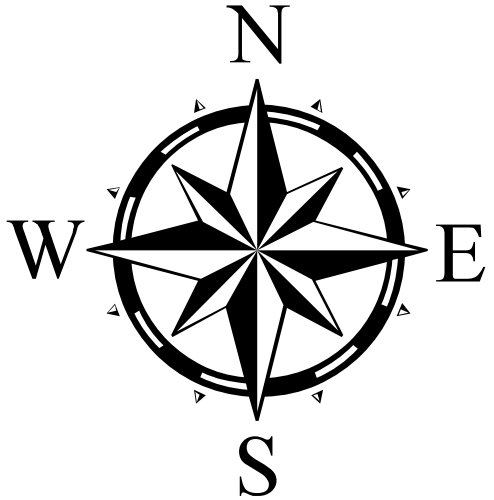
Roads and Highways

Sections



"This is to certify that this is the Official Zoning Map of the Lamar County, Mississippi, as adopted by the Board of Supervisors on _____."

Board of Supervisors President



Map Courtesy of Lamar County Board of Supervisors
Map furnished by Lamar County GIS Department
Date printed: 06/30/2022